



CRESCENDO CVO

LEER EN
BELEEF

WELCOME TO CRESCENDO CVO CAMPUS GLTT RODE

Our team will make sure that you can learn in the best conditions. Because as a student, you are at the heart of what we do.

Marleen Mast leads Crescendo CVO as director.

The centre is organised in training groups, supported by teams. Your teachers and the student administration team on the campus where you are taking your classes are your first points of contact.

In the **CENTRE REGULATIONS** you can read more about all your rights and obligations. You can find the centre regulations on the website. www.crescendo-cvo.be > *practical information* > *centrumreglement*

PRESENT OR ABSENT?

In order to successfully complete your course, we expect you to attend classes on a regular basis. You will also practise or study at home. The classes in Crescendo CVO follow the school calendar. The calendar can also be found on our website.

www.crescendo-cvo.be > *practical information* > *calendar*

Will you be absent from class? Report this as soon as possible via the website. To do so, click on the 'absence notice' button on the contact page, choose your campus and the form to fill in will open.

www.crescendo-cvo.be > *contact* > *absence notice*

TRAJECTORY COACHING

At Crescendo CVO, we offer you a model training programme in Dutch, in which you can work on your written and oral skills. But sometimes an individual course is necessary. Please contact nederlands.rode@crescendo-cvo.be

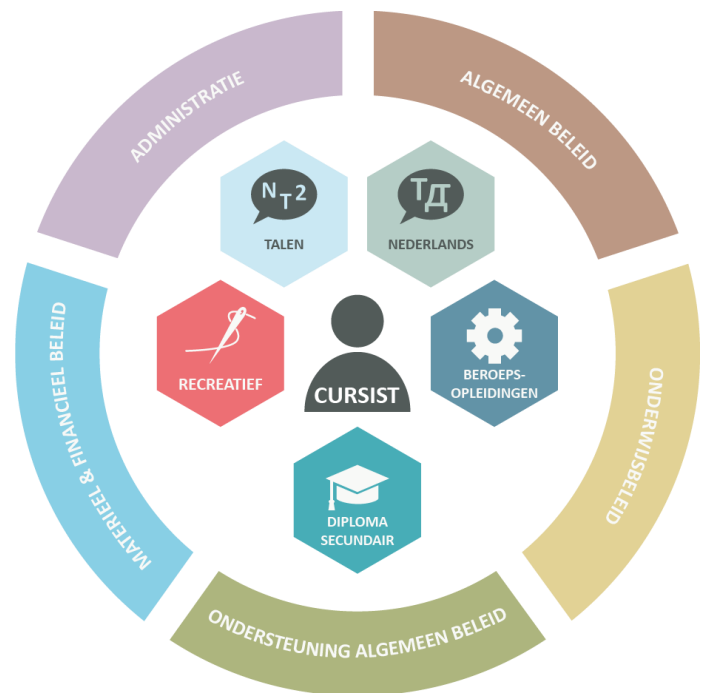
FLEMISH TRAINING LEAVE AND TRAINING VOUCHERS

Are you 50% employed in the private sector in Flanders? Then for some courses you are entitled to training leave. More info: www.vlaanderen.be/vlaams-opleidingsverlof

Perhaps you are also entitled to training vouchers? You can read about it in the terms and conditions: www.vlaanderen.be/opleidingscheques-voor-werknemers

CONTACT

Schoolstraat 2, 1640 Sint-Genesius-Rode
+32 2 362 03 39
secretariaat.rode@crescendo-cvo.be



And these are your contact details if you are taking classes in:

Gemeenschapscentrum De Moelie
Sint-Sebastiaanstraat 14, 1630 Linkebeek

Gemeentelijke basisschool Lot
Beerselsestraat 2, 1651 Lot

OPENING HOURS STUDENT ADMINISTRATION

Monday – Tuesday – Thursday 08:20-11:30 12:00-17:00 18:20-21:30
Saturday* 08:20-12:00

*Open on the 1st and 3rd Saturday of the month.

CAMPUS GLTT RODE

parking

The car park around Campus GLTT Rode is accessible to everyone. You can park on both car parks to the left and right of the building as well as behind the local church 150 m from the campus or in one of the adjoining streets.

by train and bus

Campus GLTT Rode is 230 m from the train stop 'De Hoek'. This train stop is located between the train stations of Sint-Genesius-Rode and Waterloo on the Brussels-Nivelles-Charerloi line. You can also reach Campus GLTT Rode with the following bus lines: bus R55 (stop 'De Hoek-Kerk'), bus 136 and 137 (stop 'Station Sint-Genesius-Rode'), bus 365a and bus 155 (stop 'Grote Hut').

bicycle shed

You can park your bicycle in the bicycle shed in the courtyard of the campus at the entrance.

drinks dispensers

Need a drink? You will find a number of vending machines on the ground floor in Block A and on the first floor in Block B.

**info for your
Crescendo CVO
account**

For technical questions about your Office 365 account and the use of Teams, you will receive support via email, by phone or during certain times on campus. More info:
www.crescendo-cvo.be > *practical information*
> *info for your Crescendo CVO account*

**Frequently asked
questions**

Do you still have questions? Check the FAQ on our website.
www.crescendo-cvo.be > *contact* > *FAQs*