



CRESCENDO CVO

LEER EN
BELEEF

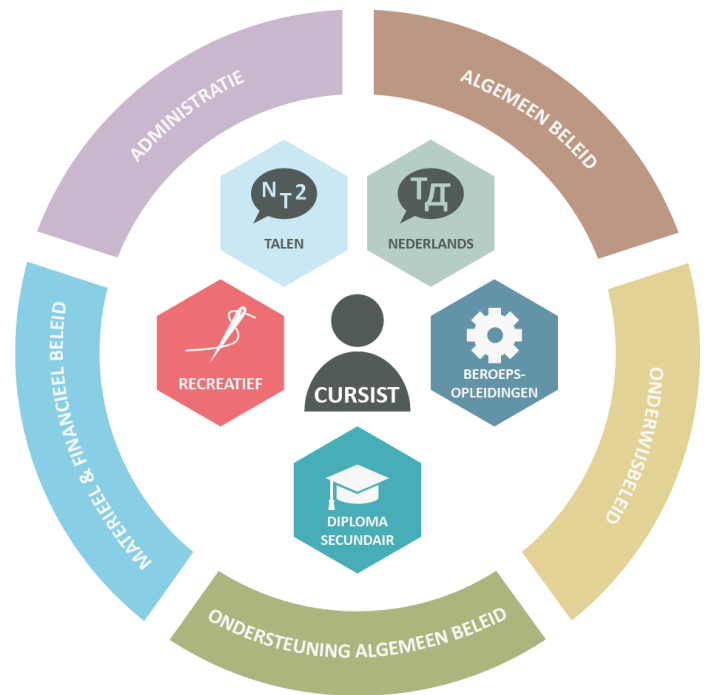
WELCOME TO CRESCENDO CVO CAMPUS TERVUREN

Our team will make sure that you can learn in the best conditions. Because as a student, you are at the heart of what we do.

Marleen Mast leads Crescendo CVO as director.

The centre is organised in training groups, supported by teams. Your teachers and the student administration team on the campus where you are taking your classes are your first points of contact.

In the **CENTRE REGULATIONS** you can read more about all your rights and obligations. You can find the centre regulations on the website. www.crescendo-cvo.be > *practical information* > *centrumreglement*



PRESENT OR ABSENT?

In order to successfully complete your course, we expect you to attend classes on a regular basis. You will also practise or study at home. The classes in Crescendo CVO follow the school calendar. The calendar can also be found on our website.

www.crescendo-cvo.be > *practical information* > *calendar*

Will you be absent from class? Report this as soon as possible via the website. To do so, click on the 'absence notice' button on the contact page, choose your campus and the form to fill in will open.

www.crescendo-cvo.be > *contact* > *absence notice*

TRAJECTORY COACHING

Would you like to be guided in your Dutch learning progress? Are you absent for a long time or do you need extra explanation or advice? Then you contact your teacher and/or the trajectory counseling: info.tervuren@crescendo-cvo.be

FLEMISH TRAINING LEAVE AND TRAINING VOUCHERS

Are you 50% employed in the private sector in Flanders? Then for some courses you are entitled to training leave. More info: www.vlaanderen.be/vlaams-opleidingsverlof

Perhaps you are also entitled to training vouchers? You can read about it in the terms and conditions: www.vlaanderen.be/opleidingscheques-voor-werknemers

CONTACT

Pater Dupierreuxlaan 1 bus B, 3080 Tervuren

+32 2 766 53 89

Info.tervuren@crescendo-cvo.be

And these are your contact details if you are taking classes in:

Oud Gemeentehuis

Gemeentehuisstraat 11, 3078 Everberg

Gemeenschapscentrum De Lijsterbes

Lijsterbessenbomenlaan 6, 1950 Kraainem

Pachthof Stroykens

Merenstraat 19, 3080 Duisburg

Lokaal dienstencentrum 't Pijlijser

René Borremansstraat 2, 3040 Huldenberg

Gemeentehuis Overijse

Justus Lipsiusplein, 3090 Overijse

Berkenhof

Beekstraat 25, 3070 Kortenberg

Gemeenschapscentrum Felix Sohie

Gemeenteplein 39, 1560 Hoeilaart

Cultuurcentrum Den Blank

Begijnhof 11, 3090 Overijse

Gemeenschapscentrum De Kam

Beekstraat 172, 1970 Wezembeek-Oppem

Gemeenschapscentrum De Bosuil

Witherendreef 1, 3090 Overijse

GBS – Kraainem

Emiel Bricoutlaan 61, 1950 Kraainem

OPENING HOURS STUDENT ADMINISTRATION

Monday – Tuesday – Wednesday- Thursday 09:00-12:00 18:00-21:00

CAMPUS TERVUREN

parking

The number of parking spaces is limited. The school park on campus can only be used in the evenings. During the day there you can park in the surrounding streets: Molenberglaan, at the back of the campus, Gordaallaan or Pater Dupierreuxlaan. They are all within walking distance.

by tram

There is no train station nearby, but there is a tram stop. The terminus of line 44 of STIB-MIVB (Montgomery-Tervuren) is within walking distance of the campus. There is a tram every 10 minutes during rush hours.

bicycle shed

You can park your bike in the spacious bike shed on the campus playground.

drinks dispensers

There is a soda and coffee machine on floor 02 at the student administration office.

info for your Crescendo CVO account

For technical questions about your Office 365 account and the use of Teams, you will receive support via email, by phone or during certain times on campus. More info:
www.crescendo-cvo.be > *practical information*
> *info for your Crescendo CVO account*

wireless internet

You can use free WiFi by logging in via Tervuren Free WiFi with your Google or Facebook account.

frequently asked questions

Do you still have questions? Check the FAQ on our website.
www.crescendo-cvo.be > *contact* > *FAQs*